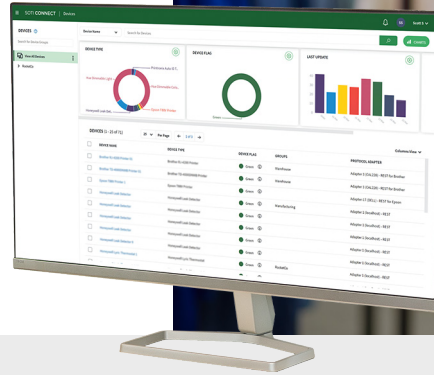




Manage Your Track and Trace Devices Everywhere



Whether you're in a retail shop, on the loading dock or in a warehouse, your Zebra RFID devices enable you to work more efficiently. They give you insights into your inventory and operation—where every asset is located, where it needs to go, and how quickly you can get it there.

They allow you to automate tasks and collect data to stay on top of inventory movement to improve operational awareness so your deliveries are more efficient, your losses are minimized, and bottlenecks and expensive shut-downs are avoided. Keep your business moving forward with Zebra RFID.

Drive even greater efficiency when you connect your entire fleet with smart management software that helps you maximize your RFID investments. With the right software, you can configure, manage and secure your RFID devices—such as RFD40 and RFD90 handheld readers—simply and easily.

Make the Right Connection To Keep Your Business Moving Forward

At Zebra, we have partnered with SOTI to empower you to remotely manage, maintain and oversee your RFID fleets with ease. SOTI Connect makes it easy to keep track of your devices while improving operational efficiencies and reducing costs.

SOTI Connect provides enterprise-grade device management for your organization's RFID device fleet throughout its complete lifecycle. **From a single point of control, you can:**



Secure and protect devices and networks against threats.



Deploy devices faster and get total visibility into their health and performance status.



Manage all your track and trace devices, no matter where they are located.



Reduce downtime, maintenance and repair costs, and overall total cost of ownership (TCO).





Benefits of Managing Zebra RFID Sleds on SOTI Connect

Maintain Security

With one dashboard covering your entire fleet, operators can easily enforce password policies, issue security certificates and monitor device locations enterprise-wide.



Protect Devices With Updated Wi-Fi Certificates and Renewals

Get Notified

Administrators can also monitor device health in real time and proactively manage issues immediately to keep workflows productive.



Automated Discovery and Enrollment

Remote Management

Administrators can remotely update, configure and manage their fleet of RFID devices, including rebooting, diagnostics and querying their status, so they can eliminate sending a technician out to the field.



Automated Configuration, Rules and Bulk Updates

Gain Insight

With access to more than 60 data points, administrators gain insight into the functioning of their devices, down to the smallest detail, so they can make smarter decisions about resource management.



Proactive Alerts and Real-Time Reporting



Scan QR code or visit www.zebra.com/SOTI-connect to learn more



ZEBRA and the stylized Zebra head are trademarks of Zebra Technologies Corp., registered in many jurisdictions worldwide. Wi-Fi is a trademark of Wi-Fi Alliance. All other trademarks are the property of their respective owners. © 2024 Zebra Technologies Corp. and/or its affiliates. All rights reserved. 08/22/2024

SOTI Global HQ
1950 Meadowvale Blvd
Mississauga, ON L5N 8L9
www.soti.net
1-888-624-9828