

# WS50 Accessories Guide

Increasing productivity through handsfree operation

Revised December 2023



<b>I.</b>	<b>Configurations that CREATE a WS50</b>	
	<b>1 Assembly</b>	
1.1	WS50 Scan Assembly	3
1.2	WS50 Camera Assembly	4
1.3	WS50 RFID Assembly	5
<b>II.</b>	<b>Accessories that POWER a WS50</b>	
	<b>2 Chargers</b>	
2.1	WS50 Single Charging Cradles	6
2.2	WS50 Multi-Slot Device Cradles	7
2.3	WS50 Multi-Slot Ethernet Cradles	8
2.4	Spare Battery Chargers	9
2.5	Multi-Slot Battery Chargers	10
	<b>3 Batteries</b>	
3.1	Spare Li-ion batteries	10
	<b>4 Power supply, cables, and adapters</b>	
4.1	WS50 Charge Cables	11
4.2	Power supply and cable matrix	12
<b>III.</b>	<b>Accessories that ENABLE productivity solutions</b>	
	<b>5 Wearable mounts</b>	
5.1	Two Finger Mount	13
5.2	Back of Hand Mount	13
5.3	Camera Mount	13
5.4	Wrist Mount	13
5.5	Replacement mount accessories matrix	14
	<b>6 External antenna</b>	
6.1	WS50 RFID External Antenna	15
6.2	External Antenna Holder for Back of Hand Mount	15

# Configurations that create a WS50



## WS50 Scan Assembly



# Configurations that create a WS50



## WS50 RFID Assembly



# Configurations that create a WS50



## WS50 Camera Thin Wrist Mount Assembly



# Configurations that create a WS50



## WS50 Camera Assembly



# Configurations that create a WS50



## WS50 Camera Clip Mount Assembly



## WS50 Single Charging Cradles



### WS50 Scan, Two Slot Device Cradle

SKU# CRD-WS5X-2SCV-01

Two slot charge-only cradle, charges two WS50 Scan devices. LED near the top of the WS50 display indicates charge status of each device. "Stadium" positioning enables viewability of the display on the rear device while a device is placed in the front slot.

- Sold separately: Power supply [SKU# PWR-BGA12V50W0WW](#), DC cable [SKU# CBL-DC-388A1-01](#), and Country-specific AC line cord [SKU# 23844-00-00R](#)

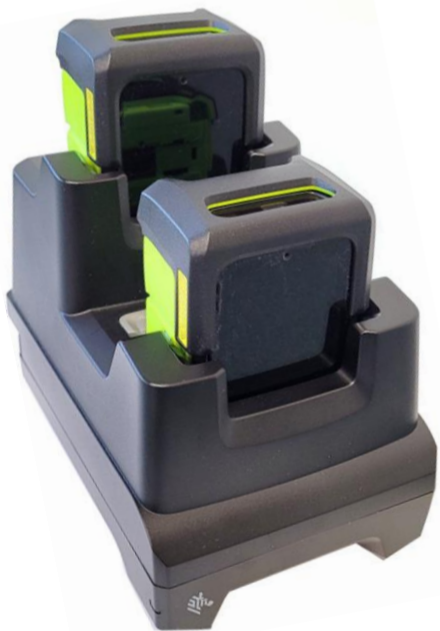


### WS50 Camera, Two Slot Device Cradle

SKU# CRD-WS5X-2SWR-01

Two slot charge-only cradle, charges two WS50 Camera devices. LED near the top of the WS50 display indicates charge status of each device. "Stadium" positioning enables viewability of the display on the rear device while a device is placed in the front slot.

- Sold separately: Power supply [SKU# PWR-BGA12V50W0WW](#), DC cable [SKU# CBL-DC-388A1-01](#), and Country-specific AC line cord [SKU# 23844-00-00R](#)



### WS50 RFID, Two Slot Device Cradle

SKU# CRD-WS5X-2SRD-01

Two slot charge-only cradle, charges two WS50 RFID devices. LED near the top of the WS50 display indicates charge status of each device. "Stadium" positioning enables viewability of the display on the rear device while a device is placed in the front slot.

- Sold separately: Power supply [SKU# PWR-BGA12V50W0WW](#), DC cable [SKU# CBL-DC-388A1-01](#), and Country-specific AC line cord [SKU# 23844-00-00R](#)



## WS50 Multi-Slot Device Cradles



### WS50 Scan, 10 Slot Device Cradle

SKU# CRD-WS5X-10SCV-01

Ten slot charge-only cradle, charges ten WS50 Scan devices. LED near the top of the WS50 display indicate charge status of each device.

- Sold separately: Power Supply [SKU# PWR-BGA12V108W0WW](#), DC Line Cord [SKU# CBL-DC-381A1-01](#), Country Specific 3 wire AC Line Cord [SKU# 23844-00-00R](#), and Rack/Wall Mounting bracket for multi-slot cradles [SKU# BRKT-SCRD-SMRK-01](#).



### WS50 Camera, 10 Slot Device Cradle

SKU# CRD-WS5X-10SWR-01

Ten slot charge-only cradle, charges ten WS50 Camera devices. LED near the top of the WS50 display indicate charge status of each device.

- Sold separately: Power Supply [SKU# PWR-BGA12V108W0WW](#), DC Line Cord [SKU# CBL-DC-381A1-01](#), Country Specific 3 wire AC Line Cord [SKU# 23844-00-00R](#), and Rack/Wall Mounting bracket for multi-slot cradles [SKU# BRKT-SCRD-SMRK-01](#).



### WS50 RFID, 10 Slot Device Cradle

SKU# CRD-WS5X-10SRD-01

Ten slot charge-only cradle, charges ten WS50 RFID devices. LED near the top of the WS50 display indicate charge status of each device.

- Sold separately: Power Supply [SKU# PWR-BGA12V108W0WW](#), DC Line Cord [SKU# CBL-DC-381A1-01](#), Country Specific 3 wire AC Line Cord [SKU# 23844-00-00R](#), and Rack/Wall Mounting bracket for multi-slot cradles [SKU# BRKT-SCRD-SMRK-01](#).

## WS50 Multi-Slot Ethernet Cradles



### WS50 Scan, 5 Slot Ethernet Cradle with Spare Battery Charger SKU# CRD-WS5X-5SECV-01

WS50 Scan Five Slot Ethernet Cradle with Spare Battery Charger, charges 5 WS50 Scan devices and 5 spare 1300mAh batteries. LED near the top of the WS50 display indicate charge status of each device. LEDs on the cradle indicate charge status of each battery.

- Sold separately: Power Supply [SKU# PWR-BGA12V108W0WW](#), DC Line Cord [SKU# CBL-DC-381A1-01](#), Country Specific 3 wire AC Line Cord [SKU# 23844-00-00R](#), and Rack/Wall Mounting bracket for multi-slot cradles [SKU# BRKT-SCRD-SMRK-01](#).



### WS50 Camera, 5 Slot Ethernet Cradle with Spare Battery Charger SKU# CRD-WS5X-5SEWR-01

WS50 Camera Five Slot Ethernet Cradle with Spare Battery Charger, charges 5 WS50 Camera devices and 5 spare 800mAh batteries. LED near the top of the WS50 display indicate charge status of each device. LEDs on the cradle indicate charge status of each battery.

- Sold separately: Power Supply [SKU# PWR-BGA12V108W0WW](#), DC Line Cord [SKU# CBL-DC-381A1-01](#), Country Specific 3 wire AC Line Cord [SKU# 23844-00-00R](#), and Rack/Wall Mounting bracket for multi-slot cradles [SKU# BRKT-SCRD-SMRK-01](#).



### WS50 RFID, 5 Slot Ethernet Cradle with Spare Battery Charger SKU# CRD-WS5X-5SERD-01

WS50 RFID Five Slot Ethernet Cradle with Spare Battery Charger, charges 5 WS50 RFID devices and 5 spare 2400mAh batteries. LED near the top of the WS50 display indicate charge status of each device. LEDs on the cradle indicate charge status of each battery.

- Sold separately: Power Supply [SKU# PWR-BGA12V108W0WW](#), DC Line Cord [SKU# CBL-DC-381A1-01](#), Country Specific 3 wire AC Line Cord [SKU# 23844-00-00R](#), and Rack/Wall Mounting bracket for multi-slot cradles [SKU# BRKT-SCRD-SMRK-01](#).

## Spare Battery Chargers



### WS50 Scan, Four Slot Spare Battery Charger

SKU# SAC-WS5X-4S13-01

WS50 Scan four slot spare battery charger, charges four 1300mAh batteries. LEDs on the cradle indicate charge status of each battery.

- Sold separately: Power supply SKU# PWR-BGA12V50W0WW, DC cable SKU# CBL-DC-388A1-01, and Country-specific AC line cord SKU# 23844-00-00R



### WS50 Camera, Four Slot Spare Battery Charger

SKU# SAC-WS5X-4S8-01

WS50 Camera four slot spare battery charger, charges four 800mAh batteries. LEDs on the cradle indicate charge status of each battery.

- Sold separately: Power supply SKU# PWR-BGA12V50W0WW, DC cable SKU# CBL-DC-388A1-01, and Country-specific AC line cord SKU# 23844-00-00R



### WS50 RFID, Four Slot Spare Battery Charger

SKU# SAC-WS5X-4S24-01

WS50 RFID four slot spare battery charger, charges four 2400mAh batteries. LEDs on the cradle indicate charge status of each battery.

- Sold separately: Power supply SKU# PWR-BGA12V50W0WW, DC cable SKU# CBL-DC-388A1-01, and Country-specific AC line cord SKU# 23844-00-00R

## Multi-Slot Battery Chargers



### WS50 Scan, 20 Slot Spare Battery Charger

SKU# SAC-WS5X-20S13-01

WS50 Scan twenty slot spare battery charger, charges twenty 1300mAh batteries. LEDs on the cradle indicate charge status of each battery.

- Sold separately: Power Supply [SKU# PWR-BGA12V108W0WW](#), DC Line Cord [SKU# CBL-DC-381A1-01](#), Country Specific 3 wire AC Line Cord [SKU# 23844-00-00R](#), and Rack/Wall Mounting bracket for multi-slot cradles [SKU# BRKT-SCRD-SMRK-01](#).



### WS50 Camera, 20 Slot Spare Battery Charger

SKU# SAC-WS5X-20S8-01

WS50 Camera twenty slot spare battery charger, charges twenty 800mAh batteries. LEDs on the cradle indicate charge status of each battery.

- Sold separately: Power Supply [SKU# PWR-BGA12V108W0WW](#), DC Line Cord [SKU# CBL-DC-381A1-01](#), Country Specific 3 wire AC Line Cord [SKU# 23844-00-00R](#), and Rack/Wall Mounting bracket for multi-slot cradles [SKU# BRKT-SCRD-SMRK-01](#).



### WS50 RFID, 20 Slot Spare Battery Charger

SKU# SAC-WS5X-20S24-01

WS50 RFID twenty slot spare battery charger, charges twenty 2400mAh batteries. LEDs on the cradle indicate charge status of each battery.

- Sold separately: Power Supply [SKU# PWR-BGA12V108W0WW](#), DC Line Cord [SKU# CBL-DC-381A1-01](#), Country Specific 3 wire AC Line Cord [SKU# 23844-00-00R](#), and Rack/Wall Mounting bracket for multi-slot cradles [SKU# BRKT-SCRD-SMRK-01](#).

## Batteries



### WS50 Scan, Spare 1300mAh Li-Ion Battery

SKU# BTRY-WS5X-13MA-01

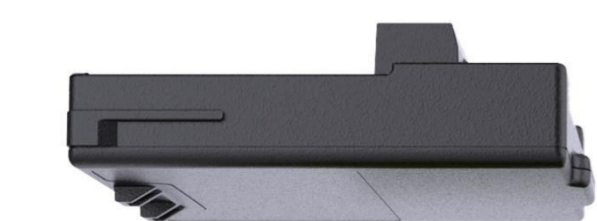
PowerPrecision Spare Lithium-Ion battery, 1300mAh, for WS50 Scan



### WS50 Camera, Spare 800mAh Li-Ion Battery

SKU# BTRY-WS5X-8MA-01

PowerPrecision Spare Lithium-Ion battery, 800mAh, for WS50 Camera



### WS50 RFID, Spare 2400mAh Li-Ion Battery

SKU# BTRY-WS5X-24MA-01

PowerPrecision Spare Lithium-Ion battery, 2400mAh, for WS50 RFID

## Power supply, cables, and adapters



### WS50 Charge Cables

#### SKU# CBL-WS5X-USB-01

WS50 charge cable with USB-C female port. Cable length 6 inches / 15cm. Requires separate purchase of USB-C to USB-A cable and AC power adapter.

- Sold separately: Power Supply [SKU# PWR-WUA5V12W0XX](#), USB-C to USB-A Cable [SKU# CBL-TC5X-USBC2A-01](#), and Micro-USB to USB-A Cable [SKU# 25-MCXUSB-01R](#).

#### SKU# CBL-WS5X-USB-02

WS50 charge cable with Micro-USB female port. Cable length 6 inches / 15cm. Requires separate purchase of Micro-USB to USB-A cable and AC power adapter.

- Sold separately: Power Supply [SKU# PWR-WUA5V12W0XX](#), USB-C to USB-A Cable [SKU# CBL-TC5X-USBC2A-01](#), and Micro-USB to USB-A Cable [SKU# 25-MCXUSB-01R](#).

#### SKU# CBL-WS5X-USBA-01

WS50 charge cable with Type A male connector. Cable length 4 feet / 1.2 meters

- Sold separately: Power Supply [SKU# PWR-WUA5V12W0XX](#), USB-C to USB-A Cable [SKU# CBL-TC5X-USBC2A-01](#), and Micro-USB to USB-A Cable [SKU# 25-MCXUSB-01R](#).

## Power supply, cables, and adapters

### Power supply and cable matrix

SKU#	Description	Note
<a href="#">CBL-TC5X-USBC2A-01</a>	USB C to USB A Communications and Charging Cable, 1M long. Connector cable for WS50 Charging cable.	
<a href="#">PWR-WUA5V12W0XX</a>	USB Power Supply for WS50 Charging cable.	
<a href="#">25-MCXUSB-01R</a>	Micro-USB to USB-A Communications and Charging Cable, 1.5M long. Connector cable for WS50 Charging cable.	
<a href="#">PWR-BGA12V50W0WW</a>	Level VI AC/DC Power Supply (Brick, replacement for PWRS-14000-148R) AC Input: 100-240V, 2.4A DC Output: 12V, 4.16A, 50W Requires: DC line cord and Country specific grounded AC line cord.	<b>Sold separately. Use as:</b> <ul style="list-style-type: none"> <li>Power supply for Four Slot Spare Battery Chargers and Two Slot Device Cradle <a href="#">SKU# SAC-WS5X-4S13-01, SAC-WS5X-4S8-01, SAC-WS5X-4S24-01, CRD-WS5X-2SCV-01, CRD-WS5X-2SWR-01, CRD-WS5X-2SRD-01</a>)</li> <li>AC Line Cord between power supply and outlet</li> <li>DC Line Cord between power supply and charger</li> </ul>
<a href="#">23844-00-00R</a>	US AC line cord, 7.5 feet long, grounded, three wire for power supplies.	
<a href="#">CBL-DC-388A1-01</a>	DC Line Cord for running the single slot cradles or battery chargers from a single Level VI power supply <a href="#">PWR-BGA12V50W0WW</a> , Level VI replacement for <a href="#">PWRS-14000-148R</a> .	
<a href="#">PWR-BGA12V108W0WW</a>	Level VI AC/DC Power Supply (Brick, Replacement for <a href="#">PWRS-14000-241R</a> ) AC Input: 100-240V, 2.8A DC Output: 12V, 9A, 108W Requires: DC line cord and Country specific grounded AC line cord.	<b>Sold separately. Use as:</b> <ul style="list-style-type: none"> <li>Power supply for 10-slot device cradle, 20-slot spare battery charger, and 5 slot ethernet cradle <a href="#">SKU# CRD-WS5X-10SCV-01, CRD-WS5X-10SWR-01, CRD-WS5X-10SRD-01, SAC-WS5X-20S13-01, SAC-WS5X-20S8-01, SAC-WS5X-20S24-01, CRD-WS5X-5SECV-01, CRD-WS5X-5SEWR-01, CRD-WS5X-5SERD-01</a></li> <li>DC Line Cord between power supply and charger</li> <li>AC Line Cord between power supply and charger</li> <li>Rack/Wall Mounting bracket for 10-slot device cradle, 20-slot spare battery charger, and 5 slot ethernet cradle</li> </ul>
<a href="#">CBL-DC-381A1-01</a>	DC Line Cord for running multi-slot cradles from a single Level VI power supply <a href="#">PWR-BGA12V108W0WW</a> , Level VI replacement for <a href="#">PWRS-14000-241R</a>	
<a href="#">23844-00-00R</a>	US AC line cord, 7.5 feet long, grounded, three wire for power supplies.	
<a href="#">BRKT-SCRD-SMRK-01</a>	Rack/Wall Mounting bracket for multi-slot cradles.	

# Accessories that enable productivity solutions



## Wearable Mounts

### Two Finger Mount



SKU# SG-WS5X-TRGA-01

WS50 Two Finger Trigger Mount

WS50 Scan/RFID replacement trigger mount.

- Includes hand strap and small finger strap

### Back of Hand Mount



SKU# SG-WS5X-BHMT-01

WS50 Scan Back of Hand Mount

- Includes mounting plate and trigger assembly. Requires separate purchase of hand wrap.



SKU# SG-WS5X-BHRS-01

WS50 RFID Back of Hand Mount

- Includes mounting plate and trigger assembly. Requires separate purchase of hand wrap.

### Camera Mount



SKU# SG-WS5X-CPMNT-01

WS50 Camera replacement clip mount.

- Includes Clip Mount and Spring Clip.



SG-WS5X-MCLIP-01

Replacement Spring Clip for the clip mount.

SG-WS5X-SHELL-01

Replacement shell for the clip mount.



SKU# SG-WS5X-TNMNT-01

WS50 Camera replacement Thin Wrist Mount.

- Strap not included, must be purchased separately.



SKU# SG-WS5X-WSTMT-01

WS50 Camera replacement wrist mount.

- Strap not included, must be purchased separately.



SG-WS5X-BNDBK-01

Replacement wrist strap for thin wrist mount, black.



## Wrist Mount

SKU# SG-WS5X-WMTRRL-01

Wrist Mount for WS50 RFID, Right Arm, Large

SKU# SG-WS5X-WMTRRS-01

Wrist Mount for WS50 RFID, Right Arm, Small

SKU# SG-WS5X-WMTRLL-01

Wrist Mount for WS50 RFID, Left Arm, Large

SKU# SG-WS5X-WMTRLS-01

Wrist Mount for WS50 RFID, Left Arm, Small



# Accessories that enable productivity solutions



## Wearable Mounts

### Replacement mount accessories matrix

SKU#	Description	Note
SG-WS5X-STRP-10	Replacement finger strap for WS50 Scan/RFID,10 pack	
SG-WS5X-SHLCS-01	Replacement protective shell for WS50 Scan/RFID. Two input buttons.	
SG-WS5X-SHLWR-01	Replacement protective shell for WS50 Camera. Four input buttons.	
SG-WS5X-DFLTC-01	Replacement protective deflector for WS50 Scan. Includes mounting screws.	
SG-WS5X-DFLTR-01	Replacement protective deflector for WS50 RFID. Includes mounting screws.	
SG-WS5X-SCRNP1-01	Replacement screen protector for WS50 display.	
SG-WS5X-WSTRP-01	Wrist strap for WS50 Camera, large size.	<b>Sold separately. Use as:</b> <ul style="list-style-type: none"> <li>Wrist strap for Camera Mount SKU# <a href="#">SG-WS5X-WSTMT-01</a></li> </ul>
SG-WS5X-WSTRS-01	Wrist strap for WS50 Camera, small size.	
SG-WS5X-CMPDR-01	Replacement Comfort Pad for WS50 RFID Finger Mount.	
SG-WS5X-WSPLRS-01	WS50 RFID Wrist Mount Plate	
SG-WEAR-HNWPXX-02	Spare Hand Wrap for WS50 Back of Hand Mount. Available in small, medium, large and left, right.	<b>Part # - Hand/Size:</b> <ul style="list-style-type: none"> <li>SKU# <a href="#">SG-WEAR-HNWPRS-02</a> - Right, small</li> <li>SKU# <a href="#">SG-WEAR-HNWPRM-02</a> - Right, medium</li> <li>SKU# <a href="#">SG-WEAR-HNWPRL-02</a> - Right, large</li> <li>SKU# <a href="#">SG-WEAR-HNWPLS-02</a> - Left, small</li> <li>SKU# <a href="#">SG-WEAR-HNWPLM-02</a> - Left, medium</li> <li>SKU# <a href="#">SG-WEAR-HNWPLL-02</a> - Left, large</li> </ul>

## External Antenna

### WS50 RFID External Antenna



#### SKU# CBL-WS5X-ANTR8S-01

- WS50 UHF RFID Antenna 800MHz, 210mm Length for Wrist Mount Left Hand, EMEA

#### SKU# CBL-WS5X-ANTR8L-01

- WS50 UHF RFID Antenna Cable, 800MHz, 240mm length for Back of Hand Mount and Wrist Mount Right Hand, EMEA

#### SKU# CBL-WS5X-ANTR9S-01

- WS50 UHF RFID Antenna Cable, 900MHz, 210mm length for Wrist Mount Left Hand, North America and Rest of World Minus EMEA

#### SKU# CBL-WS5X-ANTR9L-01

- WS50 UHF RFID Antenna Cable, 900MHz, 240mm length for Back of Hand Mount and Wrist Mount Right Hand, North America and Rest of World Minus EMEA

### External Antenna Holder for Back of Hand Mount



#### SKU# SG-WS5X-BHAHRS-01

- WS50 RFID Back of Hand Antenna Holder, Right, Small

#### SKU# SG-WS5X-BHAHRL-01

- WS50 RFID Back of Hand Antenna Holder, Right, Large

#### SKU# SG-WS5X-BHAHLS-01

- WS50 RFID Back of Hand Antenna Holder, Left, Small

#### SKU# SG-WS5X-BHAHLL-01

- WS50 RFID Back of Hand Antenna Holder, Left, Large